

# CYBER POSTURE ASSESSMENT

Gain complete visibility. Identify key gaps. Continuously strengthen IT hygiene.

## KEY BENEFITS

- » CLEAR & ACTIONABLE RECOMMENDATIONS TO IMPROVE YOUR DEFENSE
- » IDENTIFY KEY GAPS & COMPARE WITH PEERS
- » COMPLETE CROSS-GEO ASSET VISIBILITY & NETWORK TOPOLOGY
- » DEVELOPMENT OF A PRIORITIZED REMEDIATION ROADMAP OPERATIONAL COST
- » EFFECTIVE IT GOVERNANCE

## ABOUT CYBEREASON

Defending against today's threats requires security teams to prevent and cut the noise against known attacks, while quickly detecting and remediating advanced attacks. The Cybereason Defense Platform combines endpoint prevention, detection, and response all with one lightweight agent. Multi-layered endpoint prevention is delivered using signature and signatureless techniques to prevent known and unknown threats, and behavioral and deception techniques to prevent ransomware and fileless attacks.

VISIT OUR WEBSITE TO GET A DEMO OF OUR SECURITY SOLUTION

Security programs need to continually evolve to stay ahead of advanced attacks. Sophisticated cyber attackers are compromising organizations at an unprecedented rate by exploiting defensive gaps — resulting in costly business disruption.

- » Do you want to assess your organization's attack surface and uncover threats that could have been easily mitigated?
- » Do you want to identify key gaps in your security program?
- » Do you want to better understand your organizations cyber risk posture and threat exposure?

Then Cybereason's Cyber Posture Assessment is right for you.

Repercussions for security operations teams are steadily increasing as the importance of proper responsibility for the protection of critical assets rises. Security operations teams are increasingly being held accountable to ensure that critical assets are being adequately protected.

## REMOVE BLIND SPOTS. EMPOWER DEFENDERS.

While gaining visibility is a fundamental step for every security tool, it is simply not enough. Moving from a siloed point-in-time metadata view to a complete cross-machine correlated, end-to-end story is critical to accurately identify key defensive gaps and continuously measure and improve security operations programs.

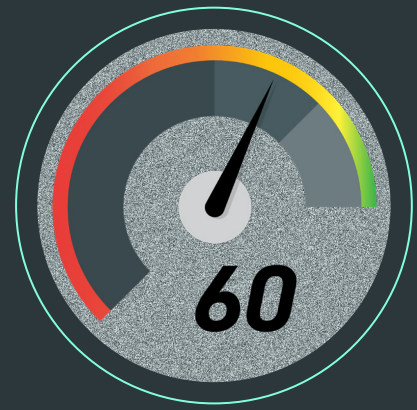
Cybereason's Cyber Posture Assessment provides you with actionable intelligence about your organization's security operations program, as well as an in-depth assessment of your overall breach readiness. From examining configured operating systems, to identifying the misconduct and misconfiguration of services, to browsing, to applications, to password management policy, and many additional indicators - Cybereason's Cyber Posture Assessment arms your team with a complete, organization-wide view. With the Cybereason Posture Assessment, your security operations team is positioned to become a global business-enabler despite the growing attack surface and an overarching digital transformation.

"If you want an EDR product that lets you respond to threats without getting frustrated over how to use it, go with Cybereason. With Cybereason, you've found your issue in 30 minutes as opposed to two hours."

- Will Perez, Cybersecurity Lead at Connecticut Water

## CYBER POSTURE RISK SCORE

Identify security operations strengths, threat detection and response readiness, and overall policy adherence. The Cybereason Cyber Posture Assessment provides rapid understanding of enterprise "state-of-affairs". Constantly enhance security readiness over time with detailed reporting and rich, easy-to-communicate data, alongside knowledge transfer from Cybereason's industry experts.



## COMPLETE ENDPOINT INVENTORY MAPPING

Maintain a complete and precise inventory of assets, including all operating systems, both roaming and connected to the enterprise network highlighting those either maliciously, misused, or misconfigured. Accessed application and network breakdowns by domain and geo-location are also available for a complete organization-wide view.

## CONFIGURATION MANAGEMENT

Maintain formal configuration management procedures and change control of endpoints according to industry best practices by detecting the presence of critical security updates and their respective risks. The Cybereason Cyber Posture Assessment discoveries reduces unnecessary attack dwell time caused by delays in patching software with critical vulnerabilities.

## PROTECT, DETECT, CONTAIN, & RESPOND SMARTER, NOT HARDER

The Cybereason Services team is Cybereason's research, hunting, IR and managed security operations arm. The team is comprised of incident responders and expert threat hunters with both defensive and offensive security expertise that span across tools, from the Cybereason Defense Platform to many other security applications. We build security operations best practices holistically by combining people, processes, and technology. We provide our skills to thousands of organizations and are able to quickly assess the current state of your organization's managed and unmanaged assets, detect the presence of critical security updates and overall patch policy, misconfigured services, and provide actionable recommendations.

Identify gaps, set goals, track improvements, continuously measure to strengthen overall IT hygiene and the organization security posture. Uplevel your security program with Cybereason services.

As part of the Cybereason Cyber Posture Assessment, if critical threats are detected as part of the engagement, additional services such as remote or on-site incident response are offered by the Cybereason Services team. Choose services that best fit your organization's needs, such as Active Response, Active Hunting or a complete incident response engagement if required.

Visit <https://www.cybereason.com/services> to learn more.

### DISCOVERY USE CASES



PATCH MANAGEMENT



MISCONFIGURED SERVICES



REMOVABLE DEVICES & PASSWORD POLICY



LOGON ANOMALIES AND MORE...